

# TIMBER PRO™

DESIGNER LOOKS PROFESSIONAL PERFORMANCE

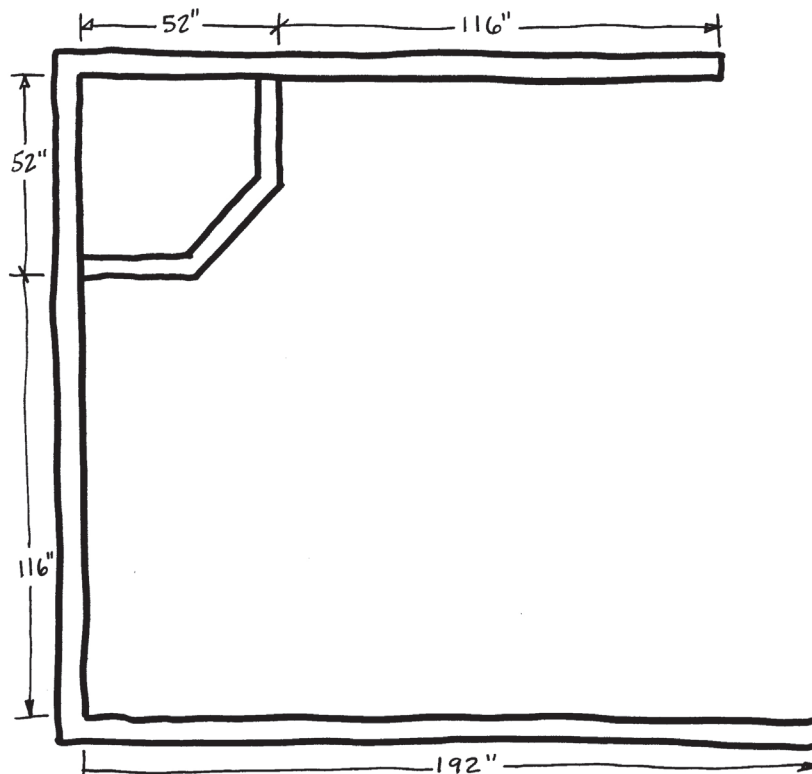
## STEP-BY-STEP MEASURING GUIDE

*The following step-by-step instructions will make measuring for your new project a snap!*

All that's required is grid paper, pencil and a tape measure. Accuracy is the key to a successful project, so take your time and be sure to double check all measurements. Make copies of the grid paper at the end of this guide for more accurate plans.

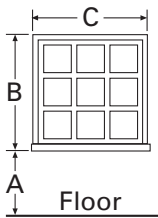
### **STEP #1**

Begin in any corner of the room with tape measure at waist height, and measure to an adjacent wall. Always measure in inches only, not feet and inches! Record your first measurement and continue around the room measuring all walls where cabinetry will be installed. Once completed, draw the floor plan and add your measurements like the example below.

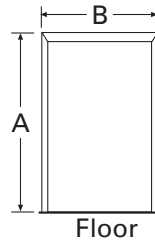


**STEP #2**

Now, measure all doors, windows and wall openings. Any door trim, window trim or opening trim is considered part of the opening, and should be included in your measurement. Record your measurements (in inches) on the charts provided below for reference in the next step.



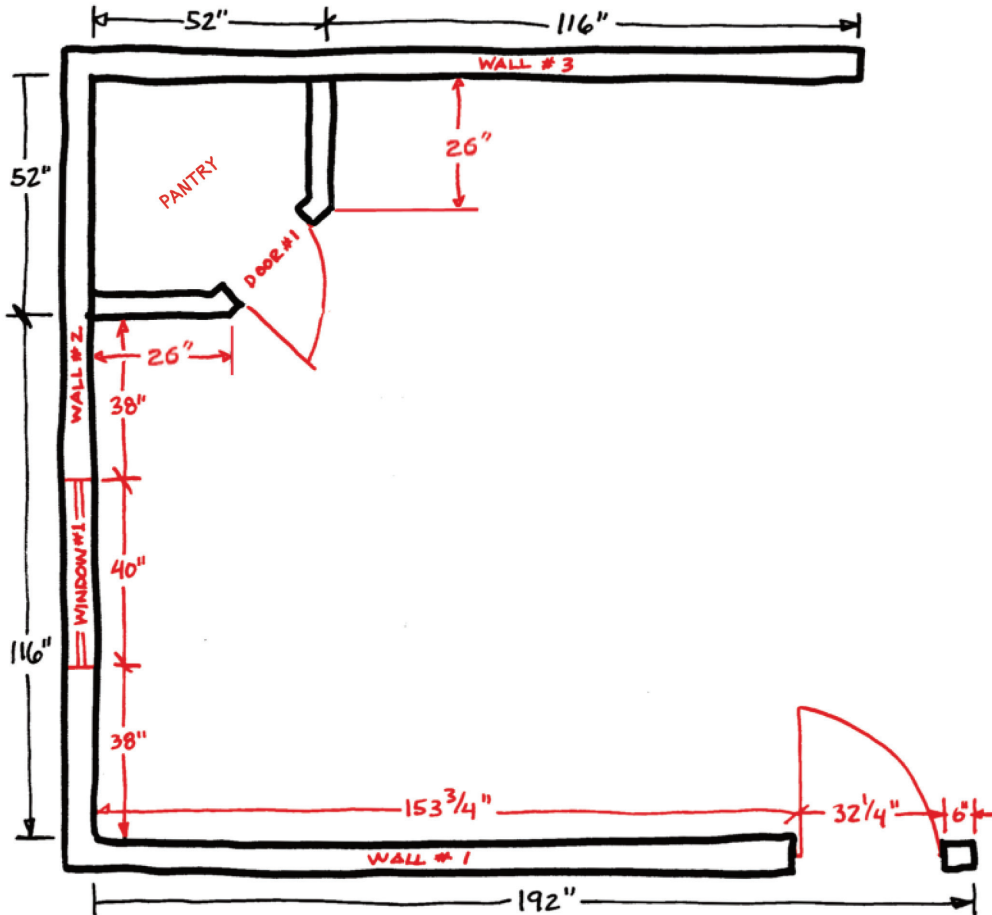
WINDOW MEASUREMENTS			
WINDOW#	DIMENSION "A"	DIMENSION "B"	DIMENSION "C"
#1			
#2			
#3			
#4			



DOOR MEASUREMENTS		
DOOR#	DIMENSION "A"	DIMENSION "B"
#1		
#2		
#3		
#4		

**STEP #3**

The next step is to locate all openings on your floor plan. Measure from the wall corner to outside edge of opening trim and locate on drawing. Add opening dimension and then, measure from outside edge of trim to adjacent wall. Repeat process for all openings. Identify all openings from the charts above and then label wall numbers for future elevation drawing reference. When placing doors on drawing, be sure to indicate which way the door opens.



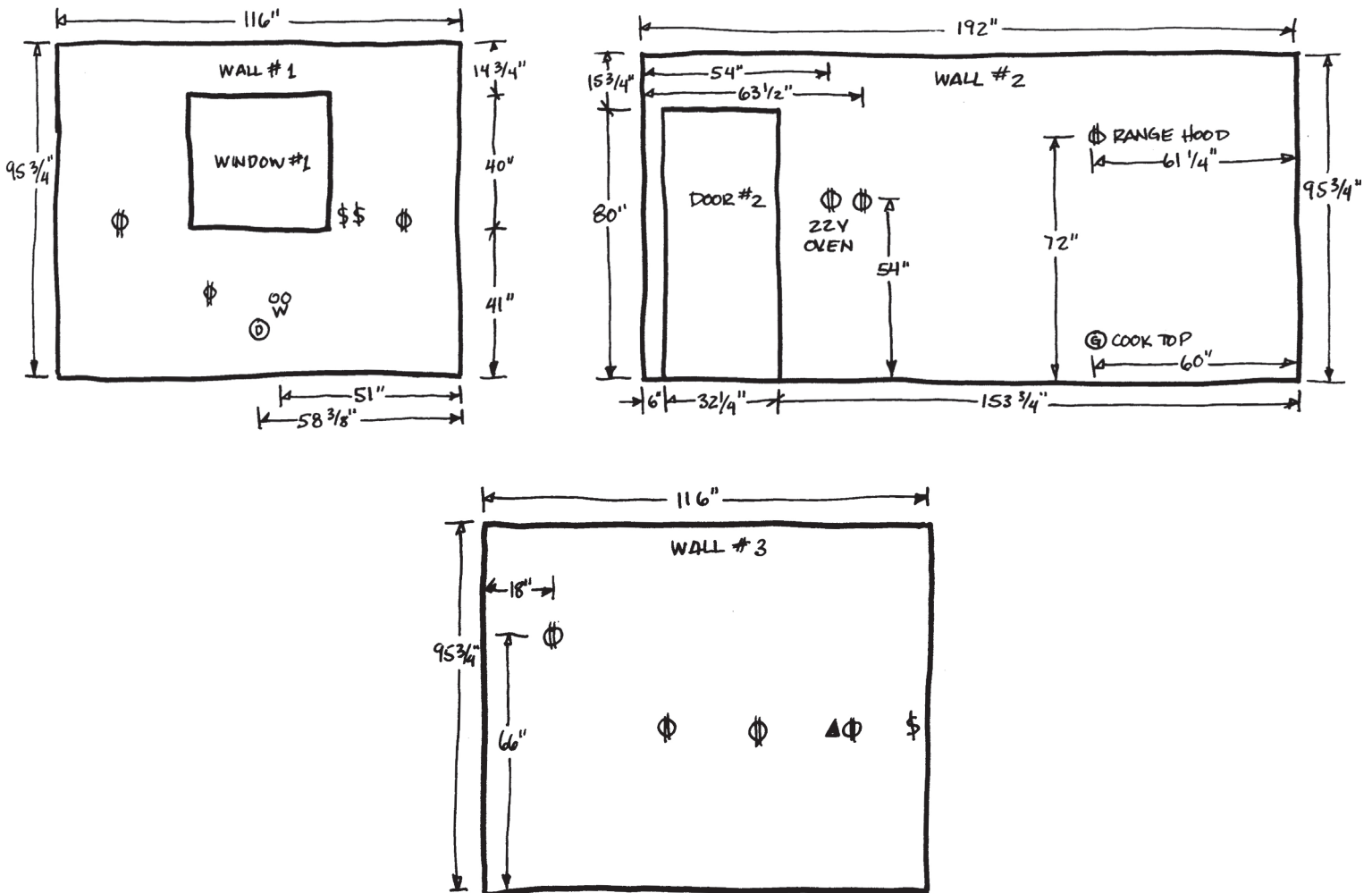
**STEP #4**

Now draw an elevation of each wall and locate all openings. Be sure to include the ceiling height and show soffits (boxed build-down from ceiling), if you have them or plan on adding them. For easy identification, use the symbols shown below to locate water lines, drain lines, electrical outlets/switches, etc.



Enter the centerline location dimensions for any applicable utility services and finally, identify any wall areas that are not to receive cabinetry or any obstructions that may complicate design. Please add any special notes or information directly on the floor plan or elevations.

**Sample Wall Elevations**



**STEP #5**

Once you have completed your floor plan measurements and wall elevations, you are ready to request your complimentary design service. To do this you must download the **TimberPro Design Request Form** from the "Free Design Services" page of the web site: <http://cabinets.flooranddecoroutlets.com/freedesignservices.aspx>. Fill out the request form, attach your drawings and email or fax your completed request to the Online Design Center:

**Email: [designservices@cabinets.flooranddecoroutlets.com](mailto:designservices@cabinets.flooranddecoroutlets.com)**  
**Fax: 1-866-855-6785**

**Customer Name:** \_\_\_\_\_

**Associate Name:** \_\_\_\_\_

Scale Drawing Grid (small square = 6"). Make additional copies if needed.

Please use a ruler and ensure all dimensions are clearly marked in inches and all notes are legible.

Page  of

